



Unique Aluminum Architectural Components with an Exotic Wood-Grain Look Designed for Commercial & Residential Use.

PRODUCT DESCRIPTION

Wood-grain aluminum architectural components for residential and commercial applications including façades, privacy fencing, decking, cladding, and more. Aluminum is eco-friendly, durable, and low maintenance.

KEY FEATURES

- Decoral® powder coating using sublimation process.
- Eco-Friendly - Cleaner, safer, and better for the environment. 100% recyclable
- Stocked in 3 colors: Toasted Marshmallow, Twilight Sun, Moonlight Kiss



MATERIAL SPECIFICATIONS

Boards - Trim - Posts	Interlocking Board: 4", 6" Self-Mating Board: 4", 6" Standard Board: 2"* , 4"* , 6" *Special Order	Starter Trim Finish Trim Finishing Concealer Inside Corner Outside Corner H-Trim Front H-Trim Back Door/Window Trim Front Door/Window Trim Back	1-Way Post 3-Way Post 3-Way Post Base 1-Way Post Cap 3-Way Post Cap
Board - Trim - Post Length:	Boards 18'-11"	Trim 18'-11"	Posts 10'* & 19' *3-Way Post Only
Board Weight:	Interlocking: 4"=1.86lbs/sq ft. (0.62lbs/lf) 6"=1.74lbs/sq ft. (0.87lbs/lf)	Self-Mating: 4"=0.86lbs/lf 6"=1.37lbs/lf	Standard: 2"=0.33lbs/lf 4"=0.605lbs/lf 6"=0.96lbs/lf

THE DECORAL® SYSTEM

Levanté® Aluminum wood-grains are built with impeccable detail. Finished with the Decoral® System, the global leader in decorative powder coating.

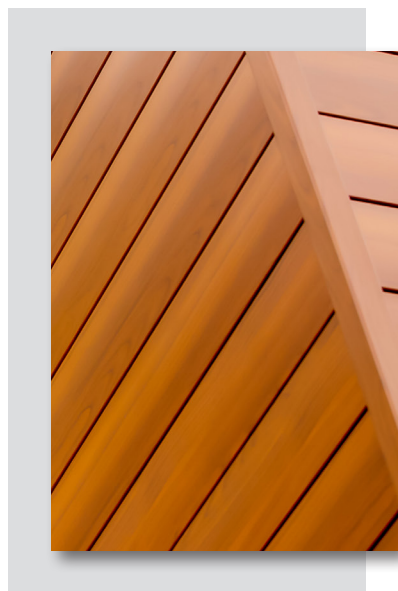
- Bonds the wood-grain and base coat through sublimation.
- Creates a high-quality, highly durable finish
- Is fire retardant & non-combustible
- Is free of solvents & heavy metals
- Is free of emitting harmful VOC emissions

INSTALLATION

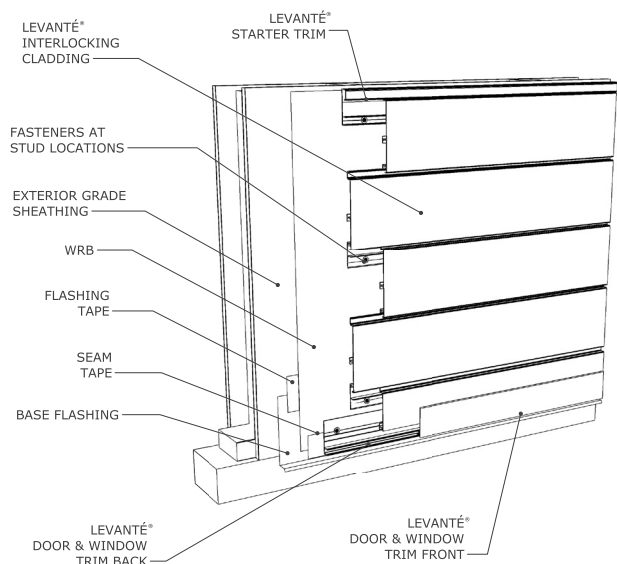
Lightweight, easy-to-use component system that's workable with basic hand tools.

WARRANTY & MAINTENANCE

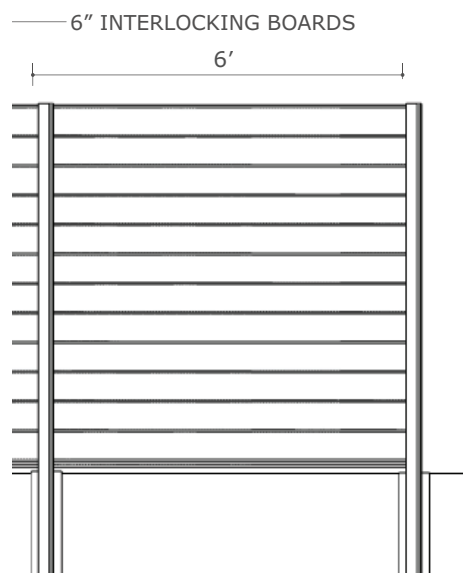
- 15-Year Product Warranty
- Register Levanté® product at www.levantealuminum.com/warranty
- Pressure wash with filtered warm water & dish soap or use a soft bristled hand brush.
- Clean annually in accordance with Levanté's Care and Maintenance Guide.



WALL DETAIL



FENCE DETAIL



TESTING

TEST STANDARD	TYPE OF TEST	CRITERIA	LEVANTÉ® PASSING RESULTS
ASTM E84	Fire Testing of Building Materials	Passing results are either a Class A, B, or C rating	Class A: FSI 0 and SDI 5
ASTM D5206-13	Standard Test Method for Wind Load Resistance	Tested with negative pressure of 10.0psf to 130.0psf for 30 sec.	Avg max sustained negative pressure 125psf (lbs per sq ft) Avg ultimate neg test pressure 130psf Equivalent to 200mph
AAMA 2604	High Performance Organic Coatings on Aluminum Extrusions	Color Uniformity; Gloss Retention; Dry Film Hardness/Adhesion; Abrasion, Humidity, & Salt Spray Resistance	Tested Levanté® Decoral® Coating System only. Achieved passing results in all categories.
ASTM D2244	Color Tolerances and Color Differences	Delta E is measure of color on a scale of 0-100. 0 is less color difference, 100 indicates complete distortion	Finish Fade <5 Delta variation over 10 years. Anything <5 Delta is not visible to the naked eye.
Modified ANSI FM 4473	Impact Resistance Testing	There are 4 classes (1-4); Class 4 is the highest rating	Class 3 & 4; 1-3/4" & 2" ice balls propelled perpendicular at 72mph without failure
ASTM F2957	Structural Testing for Aluminum Fence Systems	Test load levels 80 - 84lb & 325 - 341lb for 2 min.	Withstood 325lb Vertical load and 80lb Infill load without failure and residual deflection less than 1/4"
Intertek	Dynamic Fence Wind Load Testing	Testing starts at 30mph and increased until failure or max wind speed of 130mph.	130 mph without failure Equivalent to 3 second wind gusts up to 190mph
ASTM E330/E330M - Procedure B	Structural/Wind Load Testing for Cladding over 2" Rigid Foam	Determines structural performance under uniform static air pressure difference	-350psf (lbs per sq ft) Equivalent to 200mph wind speeds



LEVANTÉ®
ARCHITECTURAL ALUMINUM

FOR MORE INFORMATION ON LEVANTÉ® ALUMINUM ARCHITECTURAL COMPONENTS:

VISIT: www.levantealuminum.com | CALL: 800.224.2995